

Private Bank



Planning for your wealth

Essential US wealth planning strategies



Contents

Strategies when federal transfer tax exemption amounts are at an all-time high	4
Planning techniques in a volatile market	6
Planning in a rising interest rate environment	11
Ensuring trust terms remain aligned with your intentions	15
Making gifts to minors	16
Urging family members to plan for their wealth	18
The time for wealth planning is now	19

Neither Citigroup nor its affiliates provide tax or legal advice. Please contact your independent tax advisor.

Introduction

Creating a proper wealth plan is essential for the preservation of a family's wealth and legacy. It is equally critical to ensure that a plan can adapt to changing circumstances. In 2022 and 2023, much has changed. Financial market moves and shifting laws have created both risks and opportunities. Wealth planning strategies that were previously attractive have become less so and vice versa.

There are various reasons for avoiding the creation and updating of wealth plans; however, the lack of planning or failure to update a plan may result, among other things, in:

- Lack of protection of assets during your lifetime and thereafter
- Inheritance disputes
- Slow administrative procedures
- Asset depletion
- Avoidable taxes

Ideally, you should create a plan at the earliest opportunity and revisit it regularly or as warranted by changing circumstances. These may include changes in your family, your wealth, or the economic, legal, and tax environment. By acting sooner rather than later, you may be able to create tax savings, ensure that appropriate fiduciaries are in place and ensure that assets are distributed to desired beneficiaries.

Exemption amounts for federal gift and estate tax have increased for 2024 to all-time highs of \$13.61 million per individual (\$27.22 million per married couple) up from \$12.92 million and \$25.84 million respectively in 2023. This year-over-year increase was more significant than those seen in recent years due to higher inflation. These amounts represent a significant opportunity for additional tax-free gifts for people who have already used their full lifetime gift tax exemption in previous years.

It is also important to note that under the current law, these exemption amounts are scheduled to decrease by about half at the beginning of 2026. However, the reduction could conceivably be greater and occur sooner, depending on whether new tax legislation is enacted.

At the same time, interest rates have increased significantly. This can impact existing wealth plans and certain popular wealth transfer strategies. Previously, many planning strategies relied upon low interest rates as a means to transfer wealth at low cost to future generations. But while higher interest rates create challenges for certain strategies, they can also create new opportunities and increase the appeal of strategies that were less advantageous in a low interest rate environment.

This paper will highlight some of the challenges and opportunities arising from the current economic and political environment. We encourage clients to contact their Wealth Planner and independent professional advisors to ensure your plan is updated and ready to adapt to changing circumstances.

Information throughout reflects current rules under the Internal Revenue Code, Treasury Regulations, and other guidance promulgated by the United States Department of the Treasury. Information is current as of November 2023 and is subject to change.

Neither Citigroup nor its affiliates provide tax or legal advice. Please contact your independent tax advisor.

Strategies when federal transfer tax exemption amounts are at an all-time high

GIFTS TO IRREVOCABLE TRUSTS

The window of opportunity to make substantial gifts is scheduled to close at the end of 2025. Making gifts now to an irrevocable trust can help you attain your long-term wealth planning goals, as well as helping to mitigate the tax effects on wealth creation and transfer.

The irrevocable trust could be structured as a multi-generational trust to benefit the current generation and many generations thereafter, often called a Dynasty Trust. Thoughtful planning impacts not only your estate, but also the legacy you leave for your family.

Example: Dynasty planning with a transfer of \$13.61 million in trust:

You decide to fund an irrevocable Dynasty Trust for the benefit of your children and future generations. The Dynasty Trust is funded this year with \$13.61 million.

We assume as follows for the funding of this Dynasty Trust:

- You have not used any of your available transfer tax exemption amount, so the transfer will not trigger a gift tax
- Assets grow at an annualized rate of 5%

- You are in the highest income bracket and live in a state that has no state income tax and no gift, estate or GST tax
- Trusts are structured as Grantor Trusts and grow free of income tax while you are alive; upon your death, income tax is paid from trust assets
- 30 years between each generation

You act now by transferring \$13.61 million to a Grantor Trust. Trust assets grow for 30 years outside your taxable estate, during which time you pay income tax on behalf of the trust out of your own assets. After your death, trust assets continue to grow for another 30 years outside your child's taxable estate, but the trust pays its own income tax.

After the first 30 years and with a 5% annual growth rate, the value of the trust assets will be approximately \$58.82 million with the grantor paying the income taxes.

At the end of the next 30 years with a 5% annual growth rate, the value of the trust assets will be approximately \$141.12 million when the trust is paying the income tax.

By planning now, you would nearly double the assets left to your beneficiaries.

There's no assurance that investment objectives will be achieved. All investments are subject to risk of loss. Before implementing a wealth plan, consult your independent legal and tax advisors in the relevant jurisdictions regarding the appropriate strategy to achieve your objectives. Citigroup Inc. and its affiliates do not provide tax or legal advice. Not all products and services are provided by all affiliates or are available at all locations.

SPOUSAL PLANNING WITH THE HISTORICALLY HIGH GIFT TAX EXEMPTION

As mentioned, effective January 1, 2024, the lifetime federal gift and estate tax exemption increased to \$13.61 million per spouse, the highest exemption amount ever. Absent a change in the law, however, the exemption amount is scheduled to decrease by about 50% as of January 1, 2026. Faced with a historically high exemption amount that is scheduled to expire, there is great interest in techniques that could allow for the use of the exemption amount prior to expiration. Spousal planning can play an important role here.

A Spousal Lifetime Access Trust (SLAT) is an irrevocable trust strategy used by married couples. The grantor spouse transfers assets to the SLAT for the benefit of the beneficiary spouse and possibly of other family members. This is done in such a way that it removes the assets and future appreciation from the estates of both spouses for federal estate tax purposes.

Besides wealth transfer planning, the SLAT technique provides the beneficiary spouse access to the trust assets during the beneficiary spouse's lifetime. The grantor spouse may indirectly benefit from assets transferred to the SLAT, provided the beneficiary spouse is alive and married to the grantor spouse.

If the SLAT is properly structured, the beneficiary spouse may serve as a trustee to the extent distributions are limited to an "ascertainable standard" for beneficiary needs relating to health, education, maintenance, and support. For distributions relating to other needs, an independent trustee will be required.

With a properly structured SLAT strategy, a married couple can maximize their use of the current historically high exemption amount prior to a decline in the exemption amount. It is important to act sooner than later, as the exemption amount will reduce at the beginning of 2026, and possibly sooner if legislative changes are enacted.



Neither Citigroup nor its affiliates provide tax or legal advice. Please contact your independent tax advisor.

Planning techniques in a volatile market

While volatile financial markets cause uncertainty, they also present planning opportunities. Depressed assets and the potential for future growth are key factors that can contribute to the success of certain estate planning strategies.

CONSIDER CONVERTING YOUR TRADITIONAL IRA TO A ROTH IRA

If you were considering converting your traditional IRA to a Roth IRA, it might make sense to do so if your IRA account values declined amid recent market selloffs. While the conversion will trigger a state and federal income tax, the income due will be less if the conversion occurs during a market decline. After the conversion, the recovery and subsequent growth of the assets held by the Roth IRA will occur in a tax-free account.

Although paying the federal income tax now will also reduce the value of your estate, it will thereby reduce potential estate taxes, which could be up to 40%, due on death. In addition, the payment of federal income tax will be made at the current income tax rates, which are scheduled to increase in 2026 when the current law expires. Further, because of the passage of the SECURE Act of 2019, Roth IRA conversions may be an even more attractive option for individuals who want to reduce the future tax liability for their children, who may be in higher income tax brackets.

While Roth IRAs do not have required minimum distributions for the account owner, that is not the case for most beneficiaries. Under the SECURE Act, most beneficiaries must withdraw the full value of an IRA within ten years after the account owner's death. With a traditional IRA, the beneficiaries are required to take the distribution and report income received from the IRA, possibly placing them in a higher income tax bracket. By converting to a Roth IRA, the beneficiaries can avoid such future tax consequences.

Neither Citigroup nor its affiliates provide tax or legal advice. Please contact your independent tax advisor.



GIVING ASSETS DIRECTLY TO YOUR BENEFICIARIES

For 2024, the Internal Revenue Code allows an individual to give up to \$18,000 to any single recipient during the calendar year without triggering any gift tax consequences. Such gifts do not count against the donor's lifetime gift tax exemption amount. However, those gifts do not have to be made in cash. Investments such as publicly traded equities or even shares in a family entity can be given with no gift tax consequences, so long as the asset's value is less than \$18,000. When volatile markets push asset values down, you may be able to make an even more valuable gift to your beneficiaries than you could have done when markets were higher.

While a non-retirement asset held at the time of death is subject to estate tax, that asset will receive a new income tax basis equal to its fair market value as of the decedent's date of death. While you cannot take advantage of the step-up provision when giving non-retirement assets such as publicly-traded stocks during your life, the value in this strategy is that future appreciation on the transferred assets will be out of your estate for estate tax purposes.

By taking advantage of depressed asset prices, you may be able to give a larger number of shares to the recipient. Over several decades, that can result in a substantially more valuable gift.

Example: Gifts of equities

Say you own shares in a public company trading at \$200 a share. You could give up to 90 shares of that stock to your nephew without triggering any gift tax consequences. However, before you could make the same gift to your niece, the stock's value fell to \$125 a share – a more-than-37% decline. As a result, you could give her up to 144 shares to stay under that \$18,000 threshold. A few years later, the stock recovers to \$275 a share. Your nephew's 90 shares are now worth \$24,750, but your niece's shares are worth \$39,600.

There's no assurance that investment objectives will be achieved. All investments are subject to risk of loss. Before implementing a wealth plan, consult your independent legal and tax advisors in the relevant jurisdictions regarding the appropriate strategy to achieve your objectives. Citigroup Inc. and its affiliates do not provide tax or legal advice. Not all products and services are provided by all affiliates or are available at all locations.

GRANTOR RETAINED ANNUITY TRUST (GRAT)

A GRAT is a popular technique for wealth transfer planning because a properly structured GRAT can transfer large amounts of wealth out of the grantor's estate while using little - or, in many cases, none - of the grantor's lifetime gift tax exemption amount. While the technique is common in low interest rate environments, it can still be a useful technique in volatile markets. Planning with GRATs is more fully addressed later in this white paper.



GRANTOR TRUSTS - GIFTS, SALES AND LOANS

If you create an irrevocable trust during your lifetime, you can structure it as a Grantor Trust so that you are treated as the owner for federal income tax purposes, but not for federal gift, estate, or generation skipping transfer (GST) tax purposes.

To fund the trust, you would make an initial gift using some or all your lifetime gift tax exemption amount. The trust can then purchase assets from you in exchange for a promissory note at an interest rate no lower than the Applicable Federal Rate or "AFR."

As the owner of the trust for federal income tax purposes, you will be responsible for reporting the trust's income and capital gains on your personal income tax return. Any income taxes you pay from your own assets - due to reporting the trust's income and capital gains on your tax return - will not be treated as an additional gift to the trust. As such, the trust's assets can grow without erosion by income tax payments.

Also, the sale of assets and your loan to the Grantor Trust will generally have no income tax consequences for you or for the trust. As a result, if the total return of the assets sold to the trust exceeds the promissory note's stated interest rate, such excess return - both realized and unrealized - will accrue to the trust and thus be outside your estate.

However, if the total return does not exceed the interest rate, the trust will likely remain liable for repaying the loan, which could bring the assets back into your estate by repayment of the promissory note by the trust to the grantor.

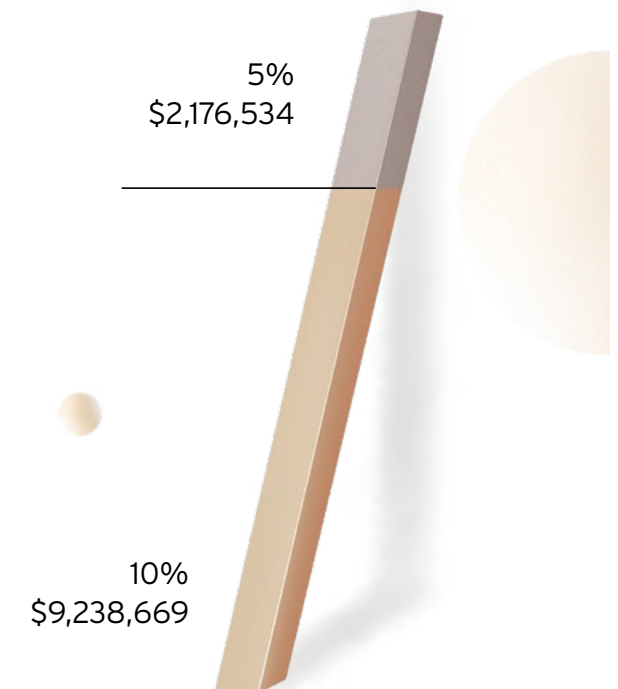
Neither Citigroup nor its affiliates provide tax or legal advice. Please contact your independent tax advisor.

Example: Sale to a Grantor Trust

In January 2024, the grantor transferred \$1 million of stock to a Grantor Trust. The grantor then sold \$9 million of stock to the trustee of the Grantor Trust in exchange for a \$9 million promissory note. The promissory note provided for annual interest-only payments, using the mid-term AFR of 4.37% for January 2024. Full repayment of the outstanding principal was due at the end of nine years.

The following table shows the value of the Grantor Trust's remaining assets at the end of 9 years after repayment of the \$9 million note, assuming various annual return rates on the Grantor Trust's assets.

Trust's hypothetical annual return / remaining assets



There's no assurance that investment objectives will be achieved. All investments are subject to risk of loss. Before implementing a wealth plan, consult your independent legal and tax advisors in the relevant jurisdictions regarding the appropriate strategy to achieve your objectives. Citigroup Inc. and its affiliates do not provide tax or legal advice. Not all products and services are provided by all affiliates or are available at all locations.

EXERCISE SUBSTITUTION POWERS IN EXISTING GRATS AND GRANTOR TRUSTS

One of the primary goals of a GRAT and gifts to irrevocable trusts is to shift appreciation to beneficiaries. But what happens when a transferred asset declines in value?

Most GRAT and Grantor Trust agreements include substitution or “swap” powers. These permit the grantor of the trust to swap assets of equivalent value with the assets in the trust without any income tax consequences.

Assuming such powers exist in the trust agreement, during times where asset values may have dropped since inception of the trust, the grantor may be able to swap personal assets such as cash in return for the asset in the trust and then either:

1. transfer the asset to a new GRAT or
2. do an installment sale with the asset to a new or existing intentionally defective Grantor Trust. By doing so, the grantor may still be able to transfer appreciation, including the recovery of the value of the assets, from the date of the new transfer going forward.

When substituting assets, consider working closely with your independent estate planning attorney and tax advisor to ensure the transaction is clearly documented and the necessary paperwork is prepared. In certain circumstances, it may make sense to file a gift tax return. If swap assets are not publicly traded, you may need an appraisal to determine fair market value.



There's no assurance that investment objectives will be achieved. All investments are subject to risk of loss. Before implementing a wealth plan, consult your independent legal and tax advisors in the relevant jurisdictions regarding the appropriate strategy to achieve your objectives. Citigroup Inc. and its affiliates do not provide tax or legal advice. Not all products and services are provided by all affiliates or are available at all locations.

Planning in a rising interest rate environment

In consultation with your independent tax advisor, you may then want to consider other strategies that take advantage of a rising interest rate environment, including:

- Qualified Personal Residence Trust (QPRT)
- Charitable Remainder Trusts (CRTs)

In addition, with rising interest rates and volatile markets, you may need to give special attention to existing GRATs or take advantage of the strategy for certain assets.

QUALIFIED PERSONAL RESIDENCE TRUST (QPRT)

A QPRT is an irrevocable trust that:

1. through a gift from the grantor, owns either a grantor's primary or secondary residence;
2. allows the grantor to use the property rent-free during a certain term; and
3. at the end of the term distributes the property outright or in trust for the named beneficiaries.

Although the gift of the property to the trust is taxable, this gift's value will not equal the full value of the property. Instead, the gift will be discounted for certain factors, including the grantor retaining the right to use the property.

The value of the gift is calculated using a prescribed IRS rate. The higher the federal rate, the lower the gift value of the trust's remainder interest.

Unlike some wealth transfer strategies, transferring a residence to a QPRT is an estate planning technique approved by the IRS. However, the governing code section and its underlying regulations are complex and require a thorough review to determine whether this is an appropriate strategy. Some of the considerations include:

- The grantor can live rent-free in the property during the term of the QPRT
- During the QPRT term, the grantor can be responsible for the ordinary carrying costs of the property such as minor repairs, insurance, and real estate taxes. If paid by the grantor, these expenses are not considered additional gifts to the QPRT
- The QPRT is a Grantor Trust and accordingly the grantor can deduct the real estate taxes paid, subject to any applicable limitation on deductions
- Any capital improvements made by the grantor will be considered an additional gift
- If the property is sold during the term of the QPRT, the proceeds must either be invested in a new home, distributed back to the grantor, or held in a trust structured as a GRAT
- If the property transferred is subject to a mortgage, the principal portion of the payment made by the grantor will be an additional taxable gift to the QPRT



- At the end of the QPRT term, if the grantor wants to continue residing in the property, the grantor must then pay a fair value rent
- If the grantor survives the QPRT term, all appreciation in the property passes to the beneficiaries free of transfer tax
- If the grantor dies during the QPRT term, the fair market value of the trust property at the time of the grantor's death will be includible in the grantor's estate for federal estate tax purposes
- If the grantor dies after the term of QPRT, there will be no step-up in basis in the property upon the grantor's death
- A QPRT is not an appropriate strategy for generation-skipping transfers

QPRTs can be a highly effective planning tool. In this time of rising interest rates and increasing real estate values, the QPRT may help maximize your wealth transfer to the next generation.

Neither Citigroup nor its affiliates provide tax or legal advice. Please contact your independent tax advisor.

CHARITABLE REMAINDER TRUSTS (CRTS)

A CRT is an irrevocable trust, often used for income tax planning, designed to benefit both individuals and charities. The donor or other non-charitable beneficiaries receive payments from the trust for a term of years, and one or more charities (which may include a donor advised fund), receive the remainder interest upon the conclusion of such term. CRTs can be structured several ways.

Charitable Remainder Annuity Trust (CRAT) provides annual payments to non-charitable beneficiaries in a fixed dollar amount determined as a percentage, which must be at least 5% of the initial fair market value of the trust.

Charitable Remainder Unitrust Trust (CRUT) provides annual payments to non-charitable beneficiaries in a fixed percent of at least 5% of the annually revalued fair market value of the trust assets (the unitrust payment). Unlike fixed dollar payments from a CRAT, CRUT payments will vary from year to year, depending on the changing value of the trust assets.

Additional issues to consider include:

- The donor may be entitled to a charitable income tax deduction based on the present value of the remainder interest passing to charity
- A CRT can be a good tool to diversify the proceeds of appreciated assets as there is no immediate capital gains taxes when a CRT sells appreciated assets
- Because there is no taxation to the CRT upon the sale of appreciated assets, the annuity payment will be based on the full value of the assets contributed to the CRT
- The annuity payments will be taxed to the recipient. The tax consequences will be based on the nature of the income distributed by the CRT

High-interest-rate strategies will become more attractive as interest rates rise. In particular, clients with significant built-in gain assets facing high federal and state income taxes could benefit from the deferral of income taxes in a CRT.

GRANTOR RETAINED ANNUITY TRUSTS (GRATS)

GRATs are one of the popular, yet interest rate sensitive techniques that require review in the current environment. In the current rising interest rate environment, special care and planning must be used if GRATs are to remain viable.

A GRAT is an irrevocable trust to which you transfer assets but retain the right to receive an annuity payment for a fixed term of years. The annuity payment is based upon the initial value of the GRAT's assets, the selected term of years, and a growth rate prescribed by the IRS - the Section 7520 rate, discussed in greater detail below - at the time the GRAT is funded.

With a zeroed out GRAT (a GRAT structured so that the value of the annuity paid to the grantor results in a gift value of zero), the transfer of assets will neither result in any gift tax liability, nor will it use any of your lifetime exemption amount, because the annuity payments to the grantor can be computed in such a manner that they return to the grantor both the value of the initial gift, and appreciation at the IRS-required rate. When the GRAT term ends and the final annuity payment is made, assets left in the trust can either pass outright to your beneficiaries or remain in trust.

The IRS uses the Section 7520 rate - published monthly - to ascertain the expected growth of assets within a trust for gift tax purposes. Many planners refer to the 7520 rate as the "hurdle rate." This is because any appreciation of the GRAT assets exceeding the 7520 rate would not be factored into the IRS gift tax calculations, would not have to be accounted for in the annuity payments to the grantor, and would therefore pass to the trust beneficiaries free of gift and estate tax.

Accordingly, when the Section 7520 rate is very low, as it has been in recent years, it would generally be less challenging to find assets that increase in value at a rate exceeding the 7520 rate. This would therefore result in a successful transfer of wealth. In January 2022, the 7520 rate was 1.6%; however, for January 2024, the 7520 rate increased to 5.2%, meaning that assets contributed to a GRAT must experience a more dramatic growth in value for the GRAT to beat the "hurdle rate" and effectively transfer wealth.

In a higher interest rate environment, GRATs can still be a valuable planning technique, as they are one of the few vehicles that can be used to transfer significant amounts of wealth without using a grantor's lifetime gift and estate tax exemption. However, their use requires careful planning.

With higher Section 7520 rates, grantors may want to consider using more volatile assets. Such assets may experience more larger increases in value, helping the GRAT to be successful. One technique that can allow for assets with higher volatility to be used in a GRAT is the concept of "immunization." With immunization, highly volatile assets are contributed to a GRAT and allowed to appreciate above the amount required by the 7520 rate. However, they are then substituted for a low volatility asset such as cash so as to preserve the gains made during the GRAT term. Securities-backed lending can be a particularly useful technique for implementing such immunization strategies.

Neither Citigroup nor its affiliates provide tax or legal advice. Please contact your independent tax advisor.

Ensuring trust terms remain aligned with your intentions



Trusts can be established as revocable or irrevocable. A revocable trust is typically created by its grantor to hold assets that can be managed by the grantor or on the grantor's behalf if he or she becomes incapacitated. A revocable trust can also dispose of the trust assets outside of the probate process when the grantor dies.

The grantor often serves as the initial trustee. While competent, he or she can revoke or amend the trust at any time. It is important to note that, while revocable trusts can be highly effective tools for managing assets during incapacity and avoiding probate, they do not remove assets from a grantor's estate for estate tax purposes.

To accomplish wealth transfer goals, an irrevocable trust is often required. However, this is not as easy to modify as a revocable trust. An irrevocable trust is typically established by the grantor to hold assets for the benefit of others rather than for the grantor. Usually, the grantor cannot revoke the trust or claw back the trust assets.

In addition to completing gifts or transfers to others, an irrevocable trust, in contrast to a revocable trust, generally removes assets from the grantor's estate. It thus often serves the purposes of minimizing estate taxes, as well as ensuring the proper management of the trust assets over multiple generations.

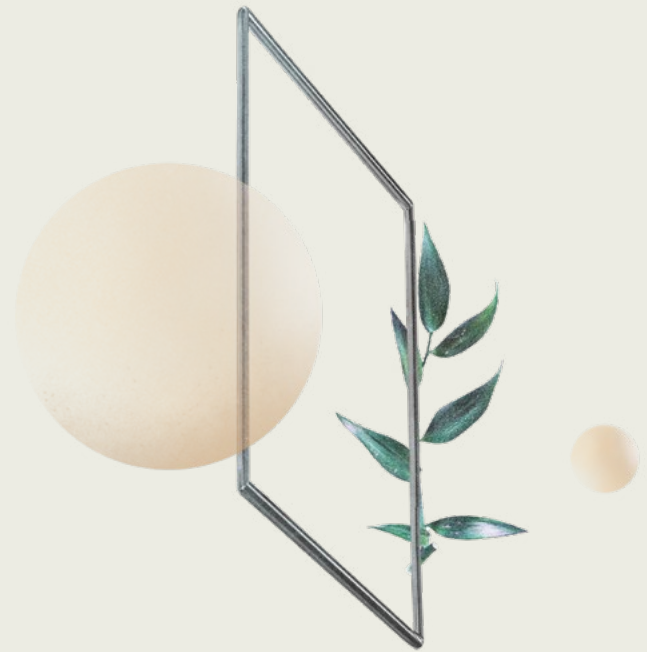
Just because a trust is irrevocable, however, does not mean it cannot be modified. This is especially true when its terms or provisions have become outdated or undesirable. In certain situations, it may be possible to modify the trust terms, even though the trust agreement may state that it cannot be amended or revoked. Depending on the terms of the irrevocable trust agreement and governing state law, trusts may be modified with the relevant parties' consent and without court proceedings, pursuant to what is referred to as a "non-judicial settlement agreement."

It may also be possible for an existing trust to transfer its assets to a new trust. This method of changing the trust terms is known as "decanting." You may seek to modify or decant a trust not only to improve its provisions but also to take advantage of jurisdictions with favorable trust laws, such as Delaware and South Dakota.

Benefits of these jurisdictions include:

- no state income tax on accumulated income
- flexibility to carve out different trustee roles, possibly allowing the grantor to serve as investment advisor to the trust
- silent trust provisions to delay notification of the existence of the trust to beneficiaries

Making gifts to minors



A parent, grandparent or other family member can make a gift to a minor in several ways. During 2024, a donor can transfer up to \$18,000 - up from \$17,000 in 2023 - in cash or property to any person, including a minor, as an annual exclusion gift. To the extent that the donor gives the minor an amount during the year that exceeds the annual exclusion gift amount, the excess portion will reduce the donor's available lifetime gift tax exemption amount or, if none is available, trigger gift tax.

Listed below are some ways to make gifts to a minor. Factors you should consider include how much control you want to retain over the transferred assets, your goals in making the gift, the purposes for which the gift will be used, income tax and estate tax considerations, and when the minor will be entitled to receive the assets.

- UTMA account
- Custodial IRA
- 529 savings plan account
- Irrevocable trust

An UTMA account ("UTMA") for a minor is typically established with a financial institution under a particular state's Uniform Transfers to Minors Act. An UTMA does not require a trust to be established by the donor. A custodian - either the donor or, preferably for estate tax reasons, another adult - manages and invests the property in the UTMA and spends funds for the minor's benefit.

Depending on state law and how the UTMA is established, the UTMA usually terminates when the minor reaches an age between 18 and 21. At this termination date, the custodian turns over the

remaining assets in the UTMA to the now-adult beneficiary. If the donor serves as custodian and dies before the termination date, the date-of-death value of the UTMA may be subject to estate taxation because of the level of discretionary control the donor/ custodian retained with respect to distributions to the beneficiary.

For minors, retirement is, of course, a distant prospect. Nonetheless, if a minor has earned income - wages, tips, and self-employment - a donor can establish and fund a custodial IRA (traditional or Roth) for the minor's benefit. This is one way you can help start a minor's retirement savings.

Like an UTMA, a custodian maintains control of the custodial IRA until the time the minor attains a certain age. The maximum amount a donor can contribute to a custodial IRA during the year is the lesser of the minor's earned income for the year or the maximum annual IRA contribution amount, currently \$6,500.

If your goal is to provide for a minor's future college expenses, you may consider creating a 529 savings plan account ("529 account") under a plan sponsored by a state or educational institution. The donor - or another adult - is the account owner of the 529 account and the minor is the designated beneficiary. The donor and other persons can contribute only cash to fund a 529 account. 529 account plans provide different investment options that the account owner can select.

Neither Citigroup nor its affiliates provide tax or legal advice. Please contact your independent tax advisor.

Earnings in a 529 account accumulate free of income tax. Withdrawals from a 529 account do not trigger income tax if used for the beneficiary's "qualified education expenses" to attend college, university, trade and vocational schools and other eligible post-secondary institutions. Qualified education expenses include tuition, books, fees, computers and some room and board expenses. Federal tax law also allows tax-free annual distributions up to \$10,000 for a minor's tuition at a K-12 school. However, it is vital to confirm that your state conforms with this federal law. Withdrawals from a 529 account for other reasons generally trigger federal and state/local income tax and possibly an additional 10% tax penalty.

Starting in 2024, the new SECURE 2.0 Act adds a degree of extra flexibility to 529 account planning by allowing the transfer of up to a lifetime limit of \$35,000 in unused 529 account funds to a Roth IRA established in the name of the same beneficiary under the original 529 plan. It is important to note that:

1. a 529 account must have been maintained for at least 15 years to qualify for such a Roth IRA transfer;
2. only contributions, and earnings attributable to contributions, made at least 5 years ago are eligible to be transferred in this manner;
3. the beneficiary must have earned income at least equal to the transferred amount in the year of transfer; and
4. any such transfer counts toward the beneficiary's cumulative IRA contribution limits for the year of transfer.

Even given these restrictions, the ability to potentially transfer up to \$35,000 of unused 529 account funds to a Roth IRA without penalty is a valuable planning strategy to address concerns about the potential overfunding of a 529 plan.

Note that a state's income tax treatment of withdrawals may not fully conform to the federal income tax laws for 529 plans. Special rules allow a

donor to frontload a 529 account with up to five years' worth of annual exclusion gifts and permit an account owner to change the designated beneficiary if the new minor beneficiary is a family member of the current minor beneficiary.

The tax laws allow you to pay anyone's tuition expense without any gift tax consequences if you pay such expense directly to an educational organization. This "Tuition Expense Exclusion" does not have any dollar limit. The Tuition Expense Exclusion does not apply to (i) amounts paid for room and board, books, or supplies, and (ii) contributions to 529 plans. You can use the Tuition Expense Exclusion to pay tuition directly to the educational organization while using a 529 plan to pay other qualified education expenses.

If your goal is to limit a minor's access to assets once they reach adulthood - and particularly if the assets are poised to grow substantially - you should consider establishing and funding an irrevocable trust. The irrevocable trust can specify detailed guidelines for distributions to the minor and provide for the timing of outright distributions, whether at a particular age or remaining in trust for the minor's lifetime. Lifetime trusts offer benefits such as asset protection, creditor protection and potential transfer tax savings.



Neither Citigroup nor its affiliates provide tax or legal advice. Please contact your independent tax advisor.

Urging family members to plan for their wealth



Understandably, younger people seldom contemplate mortality. Nevertheless, your adult children should prepare estate planning documents of their own. While it may be sensitive to discuss, you might encourage each of your children aged 18 and above to sign the following legal documents:

- durable general power of attorney (for financial purposes)
- medical power of attorney or health care directive
- authorization to release protected health information

The first two documents allow a child to appoint an agent to make financial and medical decisions on that child's behalf, should the need ever arise.

Your child should understand the importance of signing such documents and the negative consequences of not having them in place. Your child may have bank accounts, interests in a family entity or other assets acquired as gifts or from a custodial account. They should consider signing a will and/or revocable trust, which provides a testamentary plan for distributing assets and/or titling assets in a way that will allow that child's assets to pass to his or her beneficiaries without the need for probate.

Begin a conversation with your adult children about the importance of creating an estate plan and introduce them to trusted advisors who can guide them through the next steps.

In addition to discussions with children about wealth planning, if parents are living, it is important to collectively discuss their wealth and estate plans to ensure nothing in their plans conflict with your own goals and planning. As an example, many wealthy individuals may prefer their parents leave assets in trust for them and future generations, and thereby keep such assets out of their own estates, rather than leaving assets outright to a child who already has significant wealth and would then need to account for the additional assets as part of their own plan.

Neither Citigroup nor its affiliates provide tax or legal advice. Please contact your independent tax advisor.

The time for wealth planning is now

Life is inherently unpredictable, with wealth exposed to many forces that lie outside our control. The volatile financial market conditions of the last year and evolving tax and legal regimes are stark reminders of this.

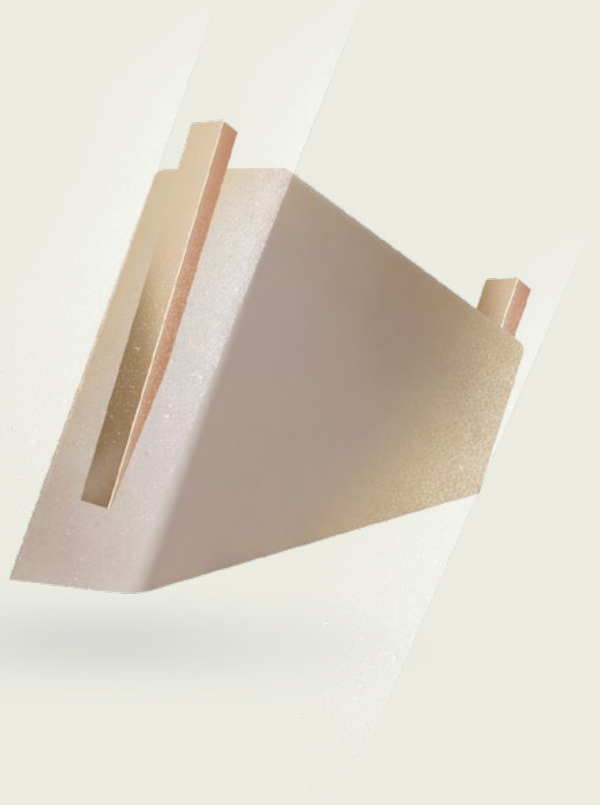
Effective wealth planning can help reduce life's uncertainties. Regular engagement with your Wealth Planner and other independent advisors can help establish whether your current plan is optimized, not just to protect from risks but also to benefit from new opportunities.

Before implementing a wealth plan, consult your independent legal and tax advisors in the relevant jurisdictions regarding the appropriate strategy to pursue your objectives.

Please contact your Private Banker or Wealth Planner for more information.

DISCOVER MORE

Citi has been globally recognized for our expertise, service and best-in-class capabilities. With roots dating back to 1822, Citi has a 200-year heritage of providing fiduciary services as the first trust company in the US, while our international trust companies are among the oldest in the industry.



Neither Citigroup nor its affiliates provide tax or legal advice. Please contact your independent tax advisor.

Important Information

Citi Private Bank is a business of Citigroup Inc. ("Citigroup"), which provides its clients access to a broad array of products and services available through bank and non-bank affiliates of Citigroup. Not all products and services are provided by all affiliates or are available at all locations.

For US clients, trust services are provided by one of the following entities: Citibank, N.A., Citicorp Trust South Dakota or Citicorp Trust Delaware, N.A. For clients who are neither residents nor citizens of the US, trust services are provided by one of the following entities: Cititrust Private Trust (Cayman) Limited, Cititrust Private Trust Zurich GmbH, Cititrust (Bahamas) Limited, Cititrust (Cayman) Limited, Cititrust (Jersey) Limited, Cititrust (Singapore) Limited, Cititrust (Switzerland) Limited, Citicorp Trust Delaware, N.A. or Citicorp Trust South Dakota.

Cititrust (Jersey) Limited, whose contact details are P.O. Box 728, 38 Esplanade, St. Helier, Jersey JE4 8ZT, Channel Islands, telephone number + 44 1534 608000 is licensed by the Jersey Financial Services Commission for the conduct of Trust Company Business.

The service providers are referred to collectively as Citi Trust. Neither Citigroup nor any of its affiliates provide tax or legal advice.

This document is made available for general guidance only. The information contained herein is not intended to be a comprehensive discussion of legal or tax advice of the strategies or concepts described. Interested clients should consult their tax and/or legal advisors. This document contains a summary of rules and planning techniques that are complex and subject to change. There is no assurance that any strategy described or discussed in the document will be successful. Interested clients should consult their tax and/or legal advisors prior to execution of any strategy.

Unless otherwise expressly indicated, this Communication does not take into account the investment objectives, risk profile or financial situation of any particular person and as such, investments mentioned in this document may not be suitable for all investors. Citi is not acting as an investment or other advisor, fiduciary or agent. The information contained herein is not intended to be an exhaustive discussion of the strategies or concepts mentioned herein or tax or legal advice. Recipients of this Communication should obtain advice based on their own individual circumstances from their own tax, financial, legal, and other advisors about the risks and merits of any transaction before making an investment decision, and only make such decisions on the basis of their own objectives, experience, risk profile and resources.

The information contained in this Communication is based on generally available information and, although obtained from sources believed by Citi to be reliable, its accuracy and completeness cannot be assured, and such information may be incomplete or condensed. Any assumptions or information contained in this Communication constitute a judgment only as of the date of this document or on any specified dates and is subject to change without notice. Insofar as this Communication may contain historical and forward-looking information, past performance is neither a guarantee nor an indication of future results, and future results may not meet expectations due to a variety of economic, market and other factors. Further, any projections of potential risk or return are illustrative and should not be taken as limitations of the maximum possible loss or gain. Any prices, values or estimates provided in this Communication (other than those that are identified as being historical) are indicative only, may change without notice and do not represent firm quotes as to either price or size, nor reflect the value Citi may assign a security in its inventory. Forward looking information does not indicate a level at which Citi is prepared to do a trade and may not account for all relevant assumptions and future conditions. Actual conditions may vary substantially from estimates which could have a negative impact on the value of an instrument. Citigroup companies may compensate their affiliates and representatives for providing products and services to clients. Citigroup Inc. and its affiliates do not provide tax or legal advice. To the extent that this material or any attachment concerns tax matters, it is not intended to be used and cannot be used by a taxpayer for the purpose of avoiding penalties that may be imposed by law. Any such taxpayer should seek advice based on the taxpayer's particular circumstances from an independent tax advisor.

© 2024 Citigroup Inc. Citi, Citi and Arc Design and other marks used herein are service marks of Citigroup Inc. or its affiliates, used and registered throughout the world.

www.citiprivatebank.com

Private Banking for Global Citizens

Private Bank 